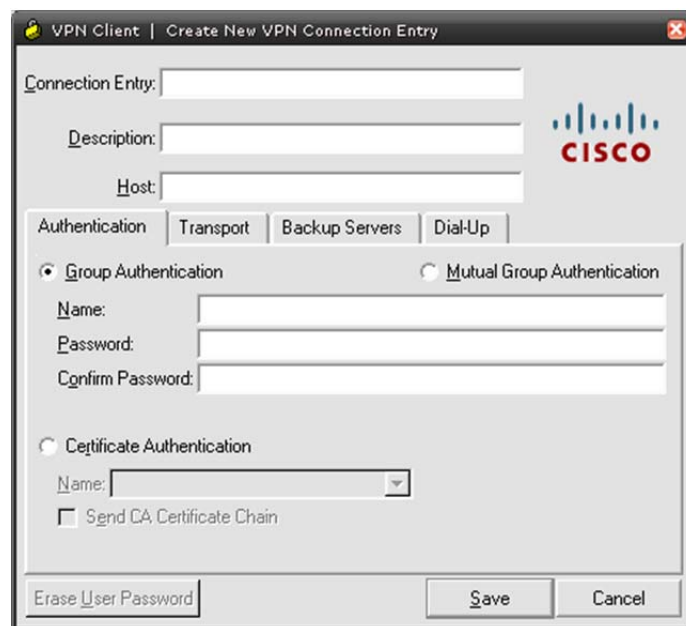


## Configuring the VPN Client for Accessibility – for Universiti Malaya Student

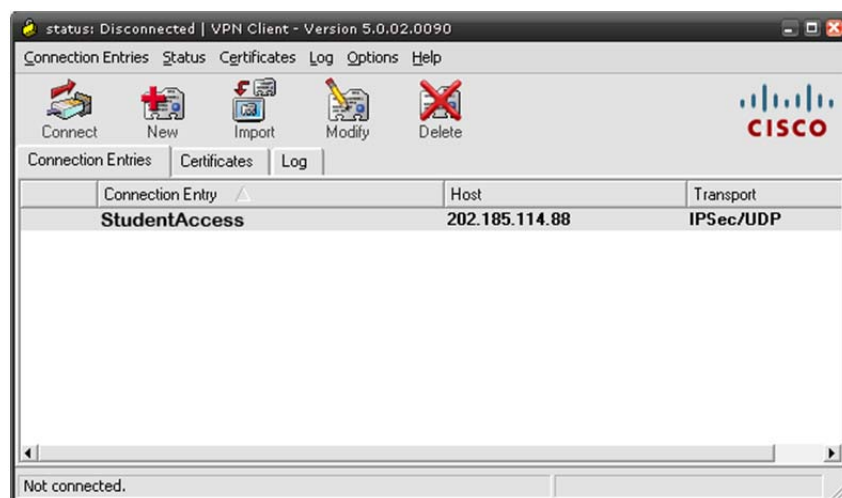
1. Click 'New' to start configure a new VPN connection entry



2. Load the field with the respective values
  - a. Connection Entry: StudentAccess
  - b. Description: VPN access for UM staff
  - c. Host: 202.185.114.88
  - d. At the Authentication tab; Group Authentication radio button is selected
    - i. Group Name : StudentVPN
    - ii. Password : !@#iamStudent\*()
    - iii. Confirm the Password given
3. Click 'Save' to finish

## Accessing the Universiti Malaya VPN tunnel

1. Select the correct Connection Entry for your type of access



2. Click '**Connect**'; VPN Client | User Authentication window box pops up
3. Load the **Username** and **Password** using your **PerdanaMail credential**



4. The VPN tunnel is successfully established when the "**yellow padlock**" is in locked pose; the padlock turns unlock pose whenever unsuccessful connection encounter, or the at the VPN Client window states status: Connected | VPN Client – Version 5.0.02.0090

